

Ben Greber **Green Machine - Die Dinge der Anderen**

27.10.2023 - 31.3.2024

Konschthal Esch, Luxembourg

Photographed 2023 -2024 © by Christof Weber



Umspannwerk (DAS GROSSE DANACH)

2023

Aluminum, plastic, steel, colored acrylic glass

Three frames, each 520 x 150 x 120 cm

Production of the artist, Kenschthal Esch & Konrad
Krieger-Stiftung

Umspannwerk

2017

Shellac and paint on cardboard, MDF, anti-glare
glass, rubber, stainless steel

Two screens, each 168 x 65 x 12 cm

Courtesy of the artist

Umspannwerk

2015

Shellac and pigment on cardboard, MDF, anti-glare
glass, aluminum, stainless steel

Two screens, 323 x 65 x 18 / 82 x 65 x 18 cm

Courtesy of the artist



Umspannwerk (DAS GROSSE DANACH)

2023

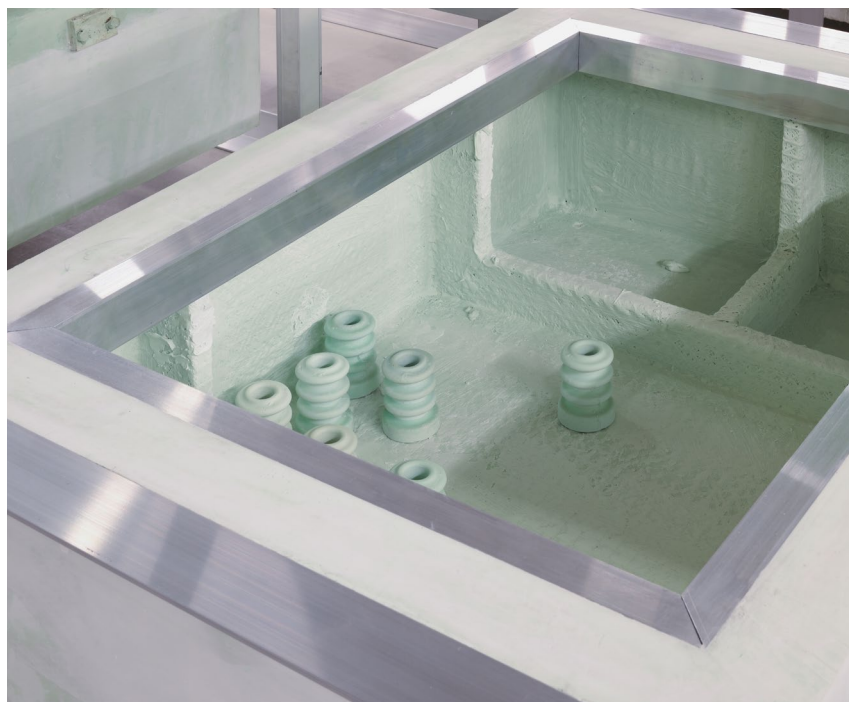
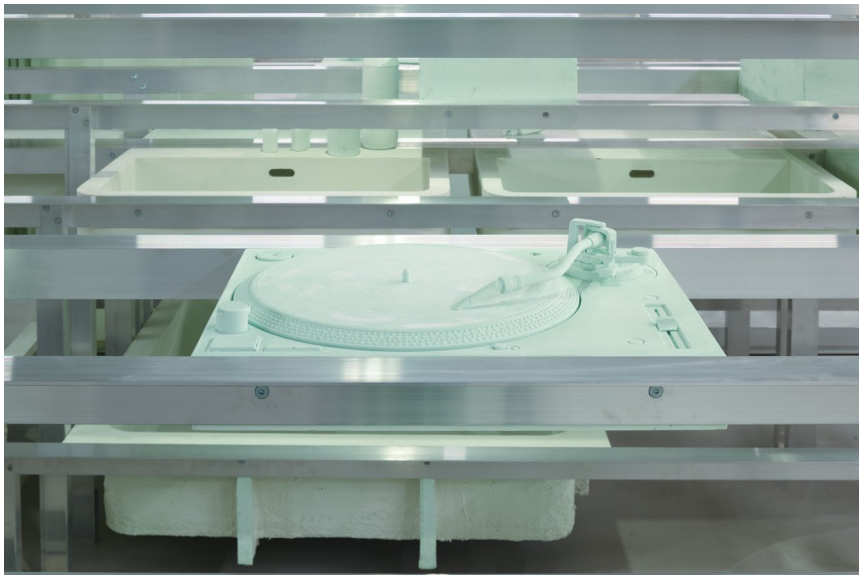
Aluminum, plastic, steel, colored acrylic glass

Three frames, each 520 x 150 x 120 cm

Production of the artist, Kenschthal Esch & Konrad
Krieger-Stiftung



Umspannwerk (DAS GROSSE DANACH) (Detail)
2023
Aluminum, plastic, steel, colored acrylic glass
Three frames, each 520 x 150 x 120 cm
Production of the artist, Kerschthaler Esch & Konrad
Krieger-Stiftung



Umspannwerk (DAS GROSSE DANACH) (Detail)
 2023
 Aluminum, plastic, steel, colored acrylic glass
 Three frames, each 520 x 150 x 120 cm
 Production of the artist, Kenschthal Esch & Konrad
 Krieger-Stiftung



Umspannwerk (DAS GROSSE DANACH)

2023

Aluminum, plastic, steel, colored acrylic glass

Three frames, each 520 x 150 x 120 cm

Production of the artist, Kenschthal Esch & Konrad
Krieger-Stiftung

Umspannwerk

2023

Paint on cardboard and paper, MDF, colored acrylic
glass

106 x 106 x 23 cm

Courtesy of the artist



Umspannwerk

2023

paint on cardboard and paper, Mdf, colored acrylic
glass

106 x 106 x 23 cm

Courtesy of the artist



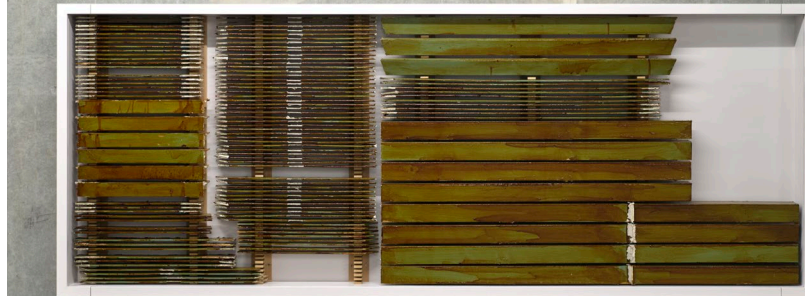
Umspannwerk

2015

Shellac and pigment on cardboard, MDF, anti-glare
glass, aluminum, stainless steel

Two screens, 323 x 65 x 18 / 82 x 65 x 18 cm

Courtesy of the artist



Umspannwerk

2017

Shellac and paint on cardboard, MDF, anti-glare
glass, rubber, stainless steel

Two screens, each 168 x 65 x 12 cm

Courtesy of the artist



Skylinked, Processions

2021

Cardboard, colored acrylic glass, plastic, paint

Five screens, each 62 x 12.5 x 7 cm

Courtesy of the artist and LAGE EGAL

Sibirisches Licht

2021

plastic, pigment

292 x 187 x 28 cm

Courtesy of the artist

Sibirisches Licht

2016

Epoxy resin, paint, filler, cardboard

Five frames, each 172 x 76 x 12 cm

Courtesy of the artist



Sibirisches Licht (Detail)

2021
 plastic, pigment
 292 x 187 x 28 cm
 courtesy of the artist

Sibirisches Licht (Detail)

2016
 Epoxy resin, paint, filler, cardboard
 Five frames, each 172 x 76 x 12 cm
 courtesy of the artist



Alles steuert der Blitz

2013

Plastic, traces of release agent, and cardboard
Size variable, about 400 x 300 x 102 cm
Courtesy of the artist

Sibirisches Licht, Processions

2022

Plastic, colored acrylic glass, acrylic paint on cardboard and silver leaf, stainless steel, rubber, MDF
385 x 124 x 12.2 cm
Courtesy of the artist and LAGE EGAL

Sibirisches Licht

2016

Epoxy resin, paint, filler, cardboard
Five frames, each 172 x 76 x 12 cm
courtesy of the artist

Sibirisches Licht

2021

plastic, pigment
292 x 187 x 28 cm
Courtesy of the artist

Skylinked, Processions

2021

Cardboard, colored acrylic glass, plastic, paint
Five screens, each 62 x 12.5 x 7 cm
Courtesy of the artist and LAGE EGAL



Sibirisches Licht, Processions

2022

Plastic, colored acrylic glass, acrylic paint on cardboard and silver leaf, stainless steel, rubber, MDF
385 x 124 x 12.2 cm

Courtesy of the artist and LAGE EGAL



Sibirisches Licht, Processions (Detail)

2022

Plastic, colored acrylic glass, acrylic paint on cardboard and silver leaf, stainless steel, rubber, MDF
385 x 124 x 12.2 cm

Courtesy of the artist and LAGE EGAL



Alles steuert der Blitz

2013

Plastic, traces of release agent, and cardboard
Size variable, about 500 x 300 x 102 cm
Courtesy of the artist

Sibirisches Licht, Processions

2022

Plastic, colored acrylic glass, acrylic paint on cardboard and silver leaf, stainless steel, rubber, MDF
385 x 124 x 12.2 cm
Courtesy of the artist and LAGE EGAL

Skylinked, Processions

2021

Cardboard, colored acrylic glass, plastic, paint
Five screens, each 62 x 12.5 x 7 cm
Courtesy of the artist and LAGE EGAL

Sibirisches Licht

2021

plastic, pigment
292 x 187 x 28 cm
Courtesy of the artist



Alles steuert der Blitz

2013

Plastic, traces of release agent, and cardboard

Size variable, about 500 x 300 x 102 cm

Courtesy of the artist



Ben Greber & Bram Kuypers

Processions 1

2020

Videoloop, 6:51 min

Cello: Patrick Reerink

Performance with a maintenance vehicle

Transrapid test track, Germany

Courtesy of the artists

Ben Greber & Bram Kuypers

Processions 2

2022

Videoloop, 5:14 min

No Sound

Running performance

Aérotrain test track, France

Courtesy of the artists



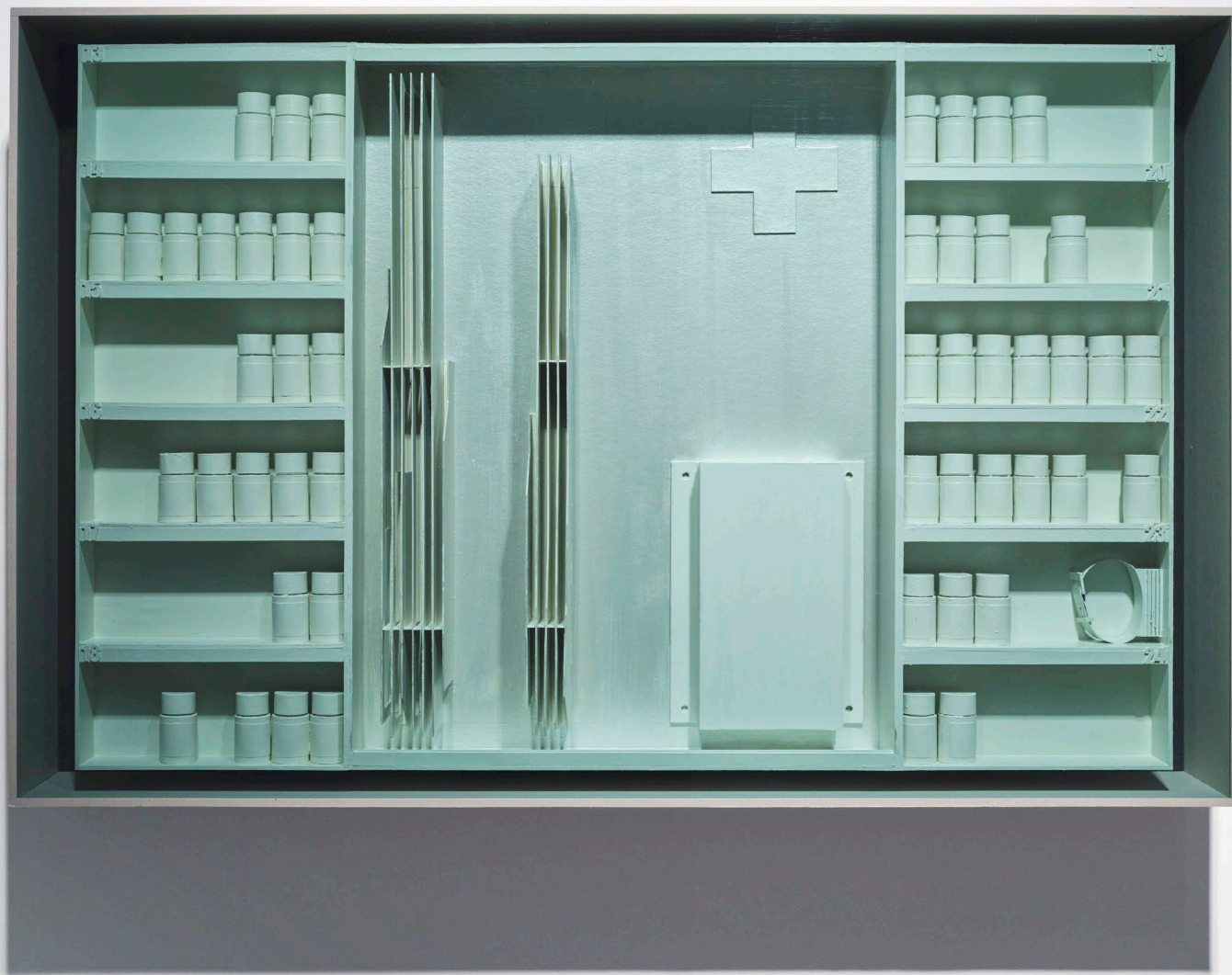
Skylinked, Screen 1

2020

Colored acrylic glass, paint on cardboard, stainless
steel

90.8 x 59.4 x 12.9 cm

Collection Marc Modert



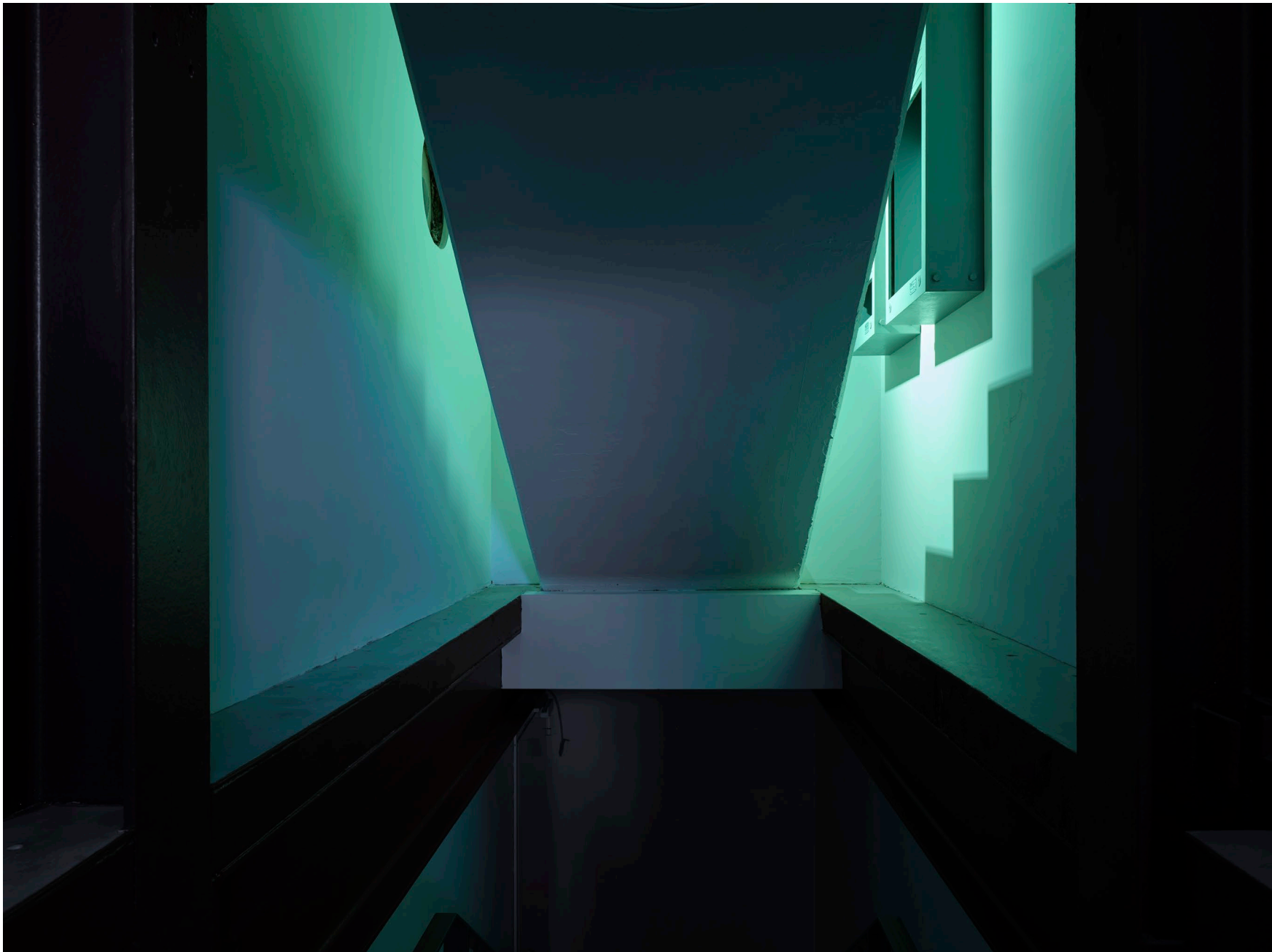
Skylinked, Screen 1

2020

Colored acrylic glass, paint on cardboard, stainless steel

90.8 x 59.4 x 12.9 cm

Collection Marc Modert



Gruß von Hollerith

2009

Door viewer, hidden staircase, green LED light
shellac and ghost paint on punchcards, cardboard,
MDF, plaster, zinc
two cabinets, each 106 x 62 x 18 cm



Evacuations 1

2018

Plastic, silkscreen print on stainless steel, rubber
 260 x 62 x 48 cm

Courtesy of the artist

Heizungsraum

2019

Black MDF, museum glass, stainless steel, bronze, copper acetate and lead pencil on cardboard, plastic, corrugated board, tin, cellulose lacquer on steel
 Five screens, each 138 x 29 x 28 cm

Courtesy of the artist

Evacuations 4

2022

Epoxy resin, pigment, silkscreen print on stainless steel

Three frames, each 128 x 88.4 x 64.4 cm

Courtesy of the artist and LAGE EGAL



Evacuations 1

2018

Plastic, silkscreen print on stainless steel, rubber
260 x 62 x 48 cm

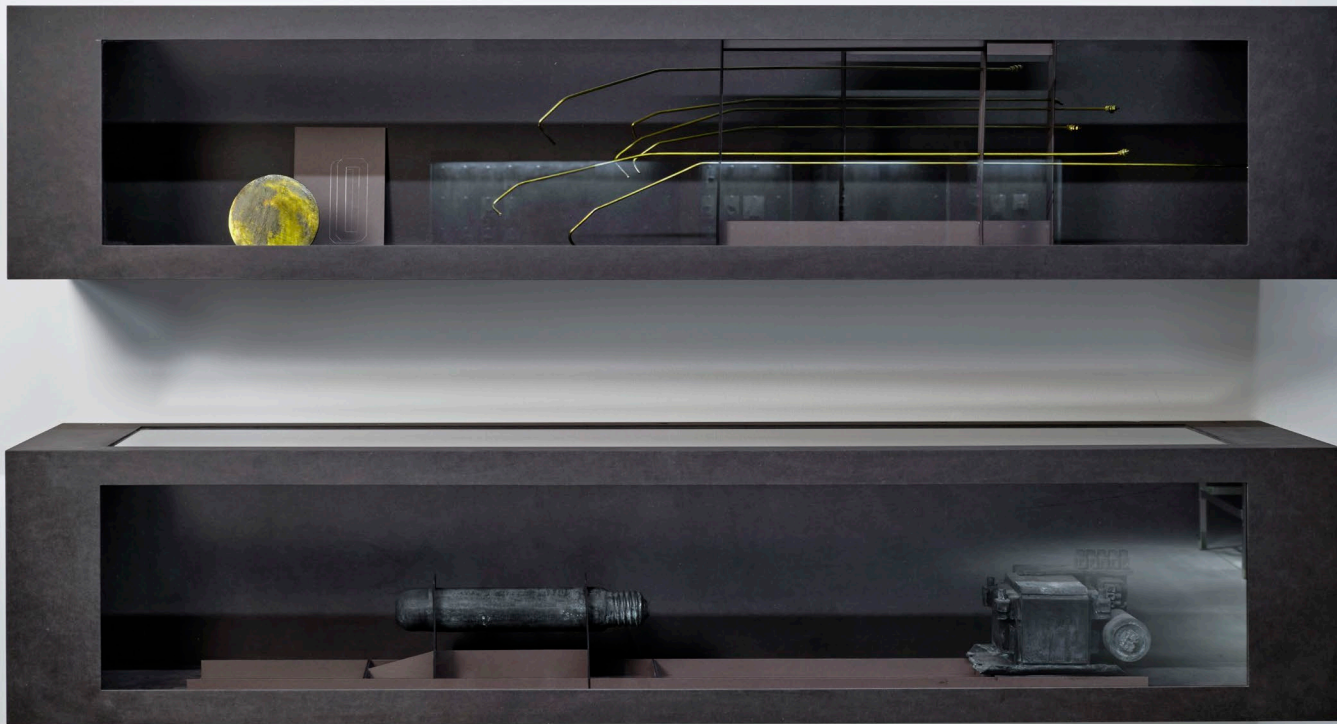
Courtesy of the artist



Heizungsraum

2019

Black MDF, museum glass, stainless steel, bronze, copper acetate and lead pencil on cardboard, plastic, corrugated board, tin, cellulose lacquer on steel
Five screens, each 138 x 29 x 28 cm
Courtesy of the artist



Heizungsraum (Detail)

2019

Black MDF, museum glass, stainless steel, bronze, copper acetate and lead pencil on cardboard, plastic, corrugated board, tin, cellulose lacquer on steel
Five screens, each 138 x 29 x 28 cm
Courtesy of the artist



Evacuations 4

2022

Epoxy resin, pigment, silkscreen print on stainless steel

Three frames, each 128 x 88.4 x 64.4 cm

Courtesy of the artist and LAGE EGAL



Evacuations 4 (Detail)

2022

Epoxy resin, pigment, silkscreen print on stainless steel

Three frames, each 128 x 88.4 x 64.4 cm

Courtesy of the artist and LAGE EGAL



Evacuations 4

2022

Epoxy resin, pigment, silkscreen print on stainless steel

Three frames, each 128 x 88,4 x 64,4 cm

Courtesy of the artist and LAGE EGAL

Evacuations 1

2018

Plastic, silkscreen print on stainless steel, rubber
 260 x 62 x 48 cm

Courtesy of the artist

On Camping

2019

Copper acetate on plastic and MDF, aluminum, glass, LED light, fake wall

Two screens, each 120 x 108 x 20 cm

Three screens, each 74 x 108 x 20 cm

Courtesy of the artist

On Camping

2019

Aluminum print on cardboard, inkjet print on paper, museum glass, colored acrylic glass, aluminum
 Three sets, each 83 x 59,4 cm

Courtesy of the artist and LAGE EGAL



On Camping

2019

Copper acetate on plastic and MDF, aluminum,
glass, LED light, fake wall

Two screens, each 120 x 108 x 20 cm

Three screens, each 74 x 108 x 20 cm

Courtesy of the artist



On Camping (Detail)

2019

Copper acetate on plastic and MDF, aluminum,
glass, LED light, fake wall

Two screens, each 120 x 108 x 20 cm

Three screens, each 74 x 108 x 20 cm

Courtesy of the artist

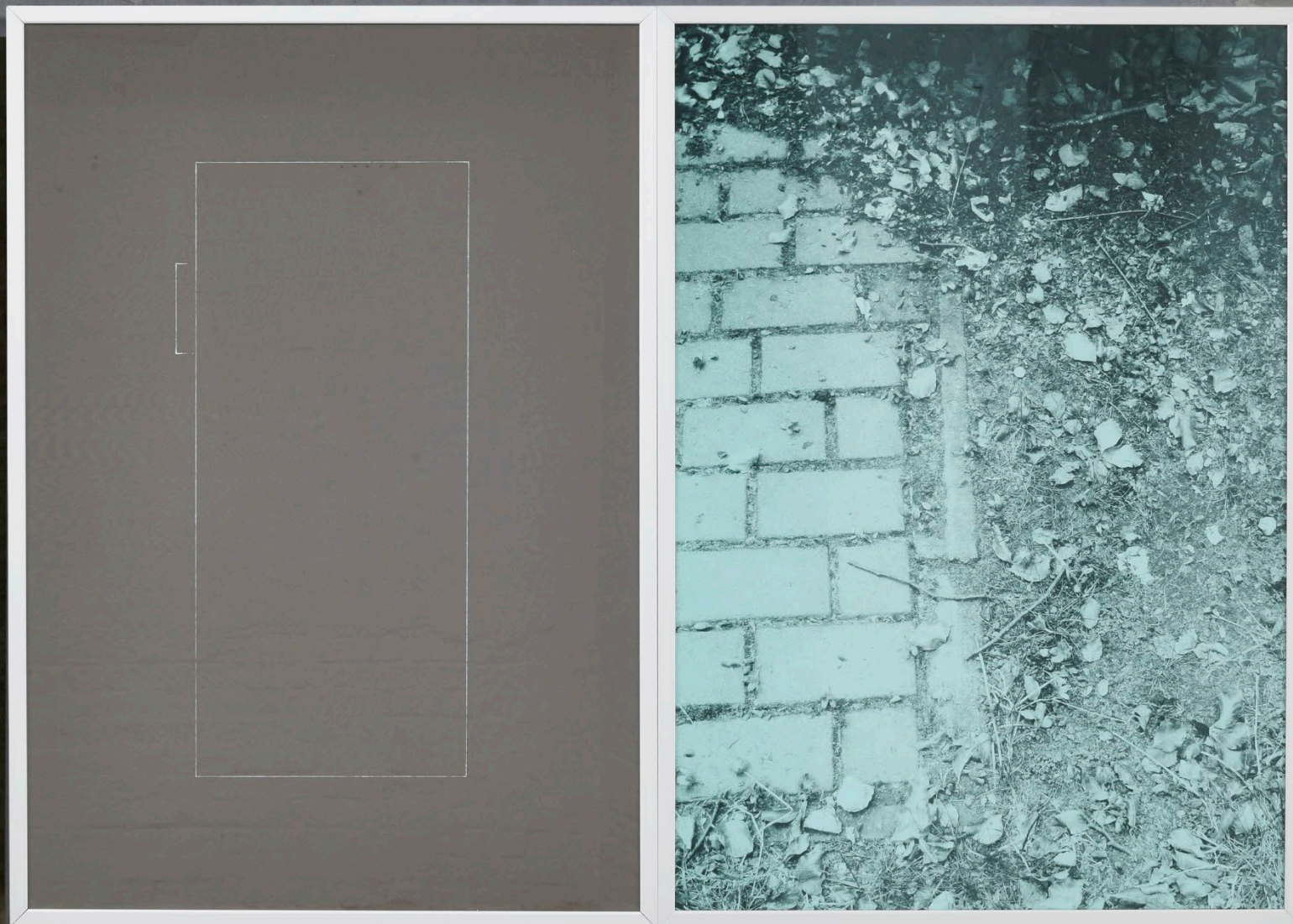


On Camping

2019

Aluminum print on cardboard, inkjet print on paper,
museum glass, colored acrylic glass, aluminum
Three sets, each 83 x 59.4 cm

Courtesy of the artist and LAGE EGAL



On Camping

2019

Aluminum print on cardboard, inkjet print on paper,
museum glass, colored acrylic glass, aluminum
83 x 59.4 cm

Courtesy of the artist and LAGE EGAL



Untitled

2012

Paint on corrugated board
55 x 27 x 53 cm

Olaf Ridder Collection



Mast

2015

Paint, putty, and epoxy resin on MDF, formica chip-board, aluminum, stainless steel

412 x 152 x 14 cm

Courtesy of the artist

Überbringer 1

2009

Paint on cardboard and plastic

Two elements, each 42 x 57 x 45 cm

Collection Hennig - Malkalns

Überbringer 1

2014

Silkscreen print, and paint on corrugated board

Series of 5 + 1 AP

242 x 95 x 4,5 cm

Christian Lepsien Collection

Courtesy of the artist



Mast

2015

Paint, putty, and epoxy resin on MDF, formica chip-board, aluminum, stainless steel

412 x 152 x 14 cm

Courtesy of the artist



Überbringer 1

2009

Paint on cardboard and plastic
Two elements, each 42 x 57 x 45 cm
Collection Hennig - Malkains

Überbringer 1

2014

Silkscreen print, and paint on corrugated board
Series of 5 + 1 AP
242 x 95 x 4,5 cm
Christian Lepsien Collection
Courtesy of the artist



Überbringer 1 (Detail)

2009

Paint on cardboard and plastic

Two elements, each 42 x 57 x 45 cm

Collection Hennig - Malkains



Überbringer 1

2014

Silkscreen print, and paint on corrugated board

Series of 5 + 1 AP

242 x 95 x 4,5 cm

Christian Lepsien Collection



Evacuations 2

2018

Plastic, silkscreen print on stainless steel, rubber

116 x 124 x 88 cm

Courtesy of the artist

Mast

2015

Paint, putty, and epoxy resin on MDF, formica chip-board, aluminum, stainless steel

412 x 152 x 14 cm

Courtesy of the artist



Überbringer 1

2014

Silkscreen print, and paint on corrugated board
Series of 5 + 1 AP
242 x 95 x 4,5 cm
Christian Lepsien Collection
courtesy of the artist

Überbringer 1

2009

Paint on cardboard and plastic
Two elements, each 42 x 57 x 45 cm
Collection Hennig - Malkalns

Evacuations 3

2018

Plastic, traces of soil and plants
198 x 97 x 32 cm
courtesy of the artist

Evacuations 2

2018

Plastic, silkscreen print on stainless steel, rubber
116 x 124 x 88 cm
courtesy of the artist

Stilllegung, Anlage 2

2018

Copper acetate on cardboard, and stainless steel,
LED light, anti-glare glass, rubber, cable
Three screens, each 120 x 51 x 47 cm
Collection Hennig - Malkalns



Stilllegung, Anlage 2

2018

Copper acetate on cardboard, and stainless steel,
LED light, anti-glare glass, rubber, cable
Three screens, each 120 x 51 x 47 cm
Collection Hennig - Malkains



Stilllegung, Anlage 2 (Detail)

2018

Copper acetate on cardboard, and stainless steel,
LED light, anti-glare glass, rubber, cable
Three screens, each 120 x 51 x 47 cm
Collection Hennig · Malkains



Evacuations 2

2018

Plastic, silkscreen print on stainless steel, rubber
 116 x 124 x 88 cm

Courtesy of the artist

Stillegung, Anlage 2

2018

Copper acetate on cardboard, and stainless steel,
 LED light, anti-glare glass, rubber, cable
 Three screens, each 120 x 51 x 47 cm

Collection Hennig - Malkains

Stillegung, Trockenlegung

2018 - 2023

Drywall material, LED light, wallpaint, plastic, card-
 board, colored acrylic glass, collage and oil painting
 by Hans-Georg Greber, broken water pump

Two rooms, 850 x 310 x 230 cm

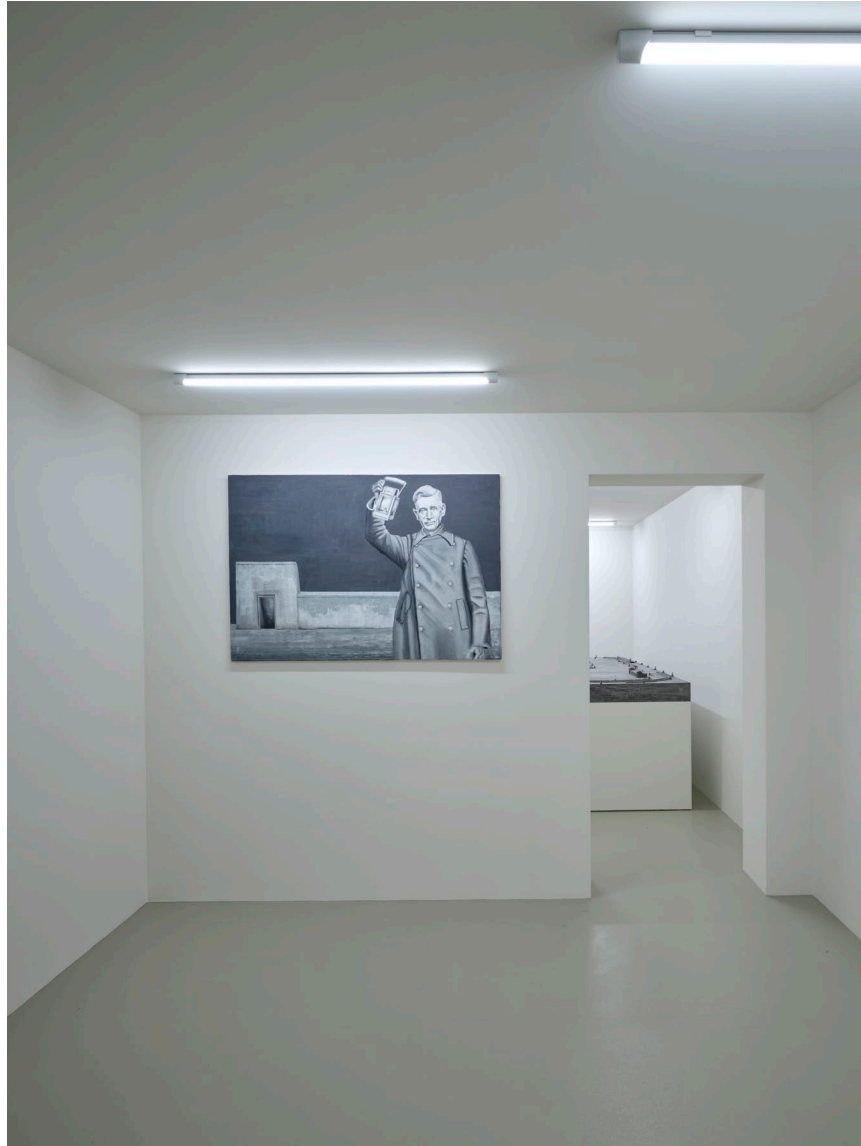
Courtesy of the artist

Evacuations 3

2018

Plastic, traces of soil and plants
 198 x 97 x 32 cm

Courtesy of the artist



Stilllegung, Anlage 1

2018
 plastic, paint on MDF
 250 x 125 x 81
 Courtesy of the artist

Trockenlegung (Detail)

2018
 Plastic, cardboard, colored acrylic glass, collage and
 oil painting by Hans-Georg Greber, broken water
 pump
 Oil painting 120 x 80 cm
 Courtesy of Hans-Georg Greber



Trockenlegung (Detail)

2018

Plastic, cardboard, colored acrylic glass, collage and oil painting by Hans-Georg Greber, broken water pump

Collage 29,7 x 21 cm

Courtesy of the artist and Hans-Georg Greber



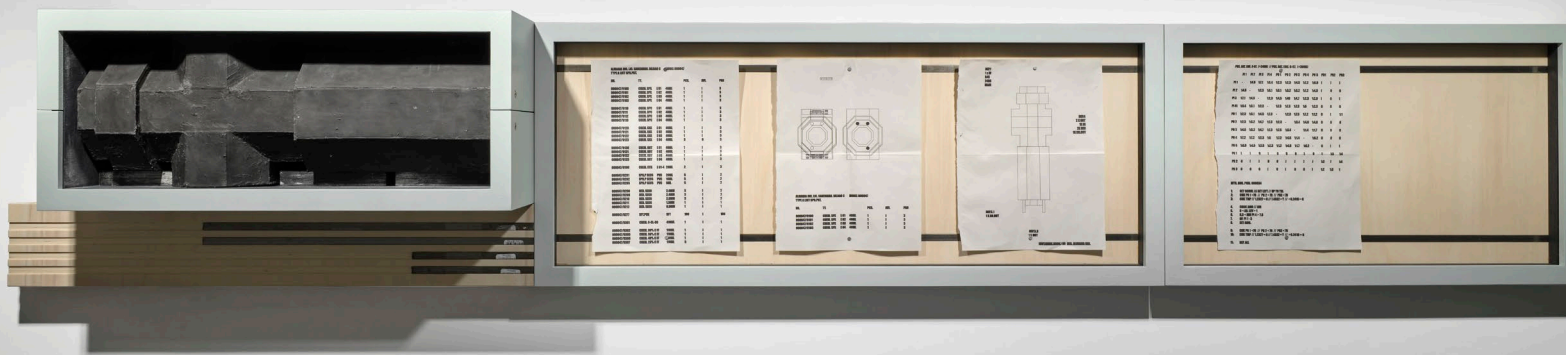
Fairfield1998

2016

Plywood, MDF, steel, stainless steel, paint, anti-glare
glass, plastic, paper, paint scrapings from the
studio wall

218 x 37.6 x 22.4 cm

« Just Love me » Art Collection Luxembourg



Fairfield1998

2016

Plywood, MDF, steel, stainless steel, paint, anti-glare glass, plastic, paper, paint scrapings from the studio wall

218 x 37.6 x 22.4 cm

« Just Love me » Art Collection Luxembourg

